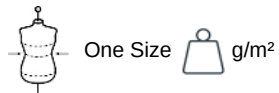


KI0374

## Recycled classic bum bag

- Practical and timeless.
- Full decoration access.
- Made from recycled fibres.

100% polyester. Classic bum bag made from 50% recycled polyester. A single, 100% customisable front compartment. Average weight size L : 145g.



### Certifications



### More information

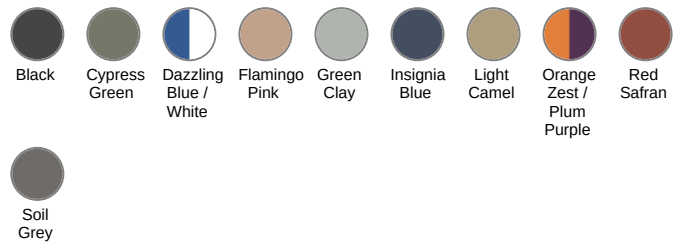
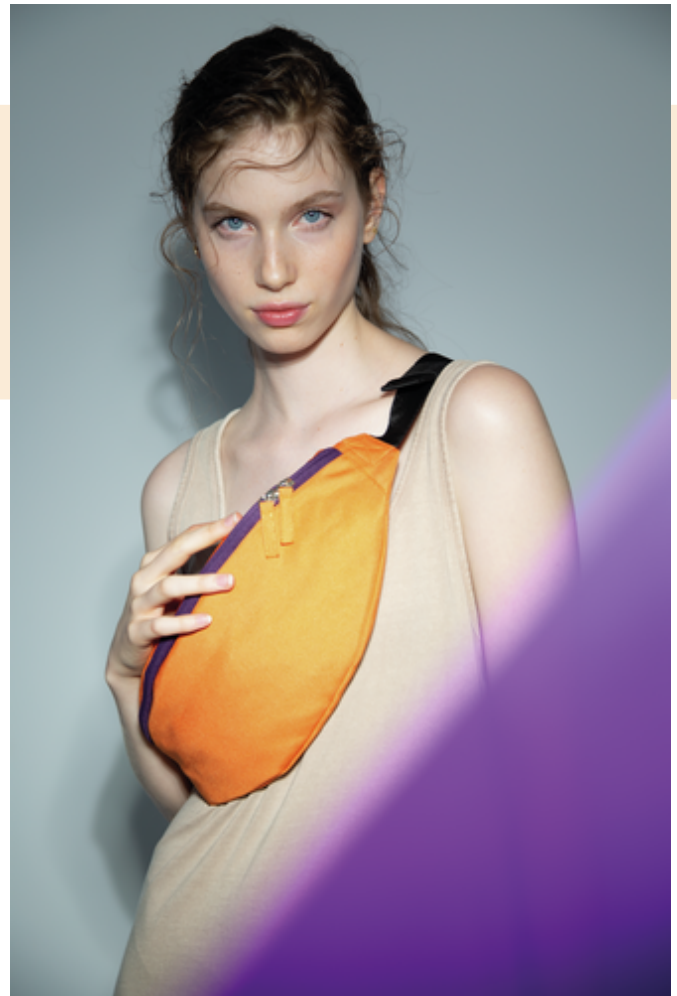
#### Logistic



#### Country of origin



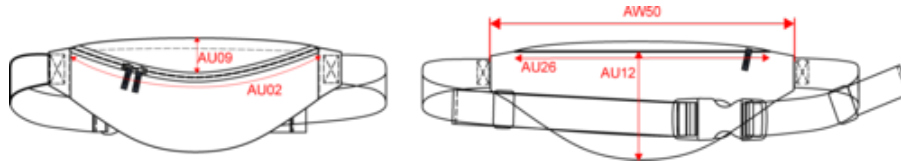
#### Customs code



KI0374

## Recycled classic bum bag

### Dimensions (cm)



Measurements in cm	One Size
AU02 - Zipper length of the opening	37.00
AU09 - Depth of bottom part	9.00
AU12 - Total height	14.00
AU26 - Pocket zipper lenght	26.00
AW50 - Total lenght	38.00



KI0374

## Recycled classic bum bag

### Colours information



**Black**

RVB : 35,35,37  
Pantone C : Black  
Pantone TCX : 19-4004TCX



**Cypress Green**

RVB : 83,89,68  
Pantone C : 7763C  
Pantone TCX : 18-0322TCX



**Dazzling Blue White**

RVB : RVB : 236,236,252  
Pantone C : Pantone C : White  
Pantone TCX : Pantone TCX : 11-0601TCX



**Flamingo Pink**

RVB : 187,135,126  
Pantone C : 7613C  
Pantone TCX : 16-1516TCX



**Green Clay**

RVB : 153,158,148  
Pantone C : 415C  
Pantone TCX : 16-5904TCX



**Insignia Blue**

RVB : 43,55,81  
Pantone C : 533C  
Pantone TCX : 19-4028TCX



**Light Camel**

RVB : 160,132,103  
Pantone C : 874C  
Pantone TCX : 17-1038TCX



**Orange Zest**

RVB : 227,116,65  
Pantone C : 7578C  
Pantone TCX : 17-1360TCX

**Plum Purple**

RVB :  
Pantone C :  
Pantone TCX :



**Red Safran**

RVB : 131,49,57  
Pantone C : 202C  
Pantone TCX : 19-1543TCX



**Soil Grey**

RVB : 77,71,71  
Pantone C : Black 7C  
Pantone TCX : 19-3900TCX

### Logistic



1



100

Sizes	Width (cm)	Height (cm)	Length (cm)	Net weight (kg)	Gross weight (kg)	Pieces/Box	Pieces/Bundle
One Size	43.00	38.00	59.00	14.50000	15.50000	100	1