

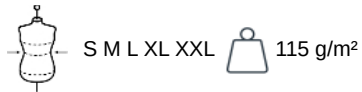
# KARIBAN

K506

## Ladies' long-sleeved pilot shirt

- Elegant, corporate look.
- Easy to clean thanks to easy-care treatment.
- Perfect for professional use.

65% polyester/35% cotton poplin. Easy-care. Matching buttons. 2 flap chest pockets including 1 with pen holder on left side. Buttoned placket on shoulders for attaching braids (braids not included). Adjustable buttoned cuffs. Average weight size M : 182g.



### Certifications

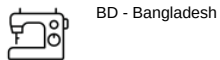


### More information

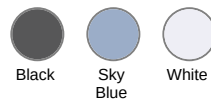
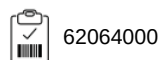
#### Logistic



#### Country of origin



#### Customs code



### Also available in version



K505

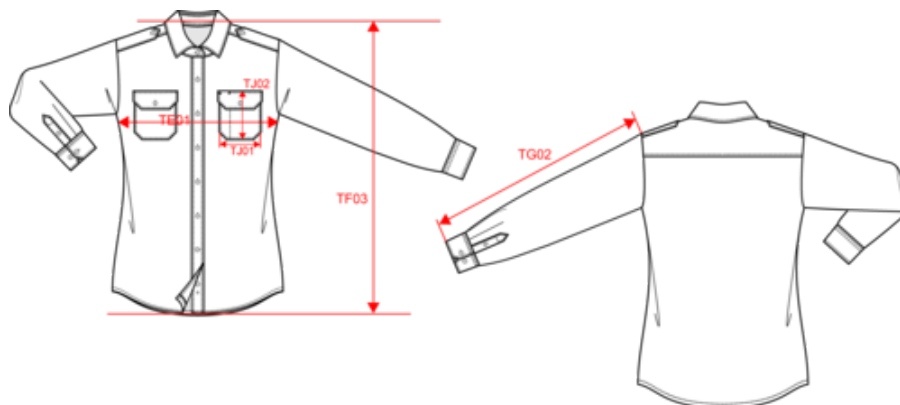


# KARIBAN

K506

## Ladies' long-sleeved pilot shirt

### Dimensions (cm)



Measurements in cm	S	M	L	XL	XXL
TE01 - 1/2 chest width at 1.5cm below armhole	47.50	50.50	53.50	56.50	59.50
TF01 - Total height from HSP	65.00	67.00	69.00	71.00	73.00
TG02 - Long sleeve length	61.00	62.00	63.00	64.00	65.00
TJ01 - Chest patched pocket(s) top width	10.00	10.00	11.00	11.00	12.00
TJ02 - Chest patched pocket(s) height at highest point	11.00	11.00	12.00	12.00	13.00

# KARIBAN

K506

## Ladies' long-sleeved pilot shirt

### Colours information



**Black**

RVB : 52,51,54  
Pantone C : 447C  
Pantone TCX : 19-4205TCX



**Sky Blue**

RVB : 136,169,206  
Pantone C : 5425C  
Pantone TCX : 14-4121TCX



**White**

RVB : 236,236,252  
Pantone C : White  
Pantone TCX : 11-0601TCX

### Logistic



1



12

Sizes	Width (cm)	Height (cm)	Length (cm)	Net weight (kg)	Gross weight (kg)	Pieces/Box	Pieces/Bundle
S	38.00000	20.00000	54.00000	2.80000	3.90000	12	0
M	38.00000	20.00000	54.00000	3.00000	4.10000	12	0
L	38.00000	20.00000	54.00000	3.10000	4.20000	12	0
XL	38.00000	20.00000	54.00000	3.20000	4.30000	12	0
XXL	38.00000	20.00000	54.00000	3.40000	4.50000	12	0