

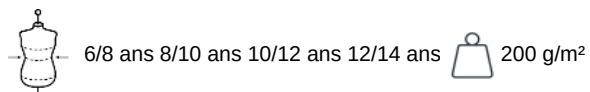
# PROACT.®

PA006

## T-shirt de criança justa manga comprida

- 12% elastano para maior conforto.
- Acabamento com costura dupla.

88% poliéster/12% elastano. Decote redondo. Costuras à cor. Acabamento costura dupla.



### Informações complementares

#### Logística



5



25



CN - China

#### Código aduaneiro



61099020

### Também existe em versão

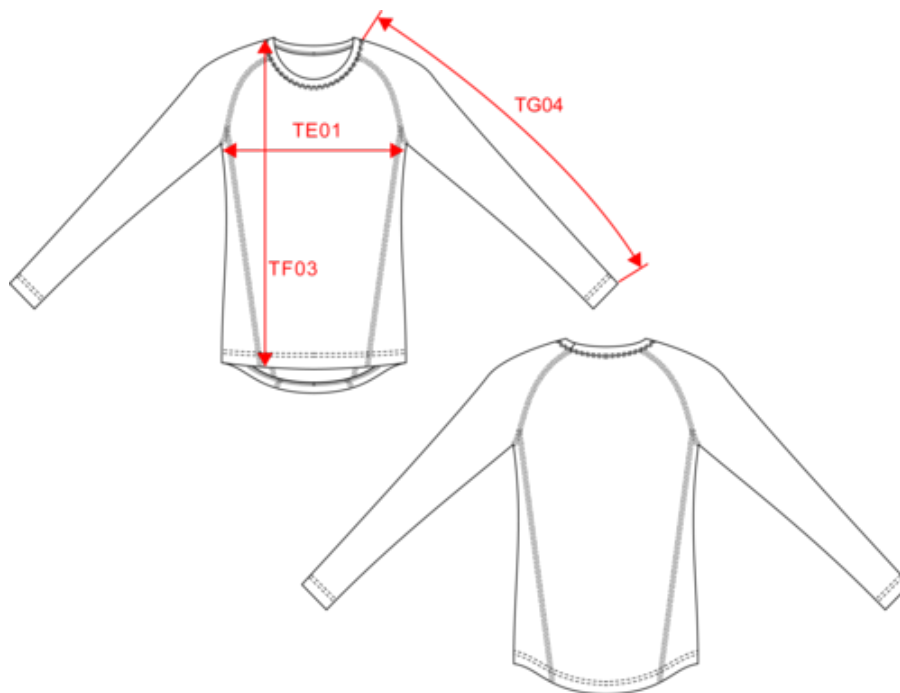


PA005



## T-shirt de criança justa manga comprida

### Dimensão



| Measurements in cm                            | 6/8 ans | 8/10 ans | 10/12 ans | 12/14 ans |
|---|---------|----------|-----------|-----------|
| TE01 - 1/2 chest width at 1.5cm below armhole | 29.00   | 32.00    | 35.00     | 38.00     |
| TF03 - Front total height from HSP            | 42.00   | 47.00    | 52.00     | 57.00     |
| TG04 - Raglan long sleeve length              | 52.75   | 55.50    | 58.25     | 61.00     |

# PROACT.®

PA006

## T-shirt de criança justa manga comprida

### Informações das cores



**Black**

RVB : 35,35,37  
Pantone C : Black / 425C  
Pantone TCX : 19-4004TCX / 18-0201TCX



**Flashy Yellow**

RVB : 248,235,37  
Pantone C : 3945C  
Pantone TCX : 12-0643TCX



**Orange**

RVB : 236,102,29  
Pantone C : 1595C  
Pantone TCX : 16-1356TCX



**Sporty Navy**

RVB : 41,52,47  
Pantone C : 533C  
Pantone TCX : 19-4024TCX



**Sporty Red**

RVB : 181,18,46  
Pantone C : 1805C  
Pantone TCX : 19-1761TCX



**Sporty Royal Blue**

RVB : 4,96,160  
Pantone C : 647C  
Pantone TCX : 18-4045TCX



**Sporty Yellow**

RVB : 247,185,13  
Pantone C : 7408C  
Pantone TCX : 14-0957TCX



**White**

RVB : 236,236,252  
Pantone C : White  
Pantone TCX : 11-0601TCX

### Logística



5



25

| Sizes     | Width (cm) | Height (cm) | Length (cm) | Net weight (kg) | Gross weight (kg) | Pieces/Box | Pieces/Bundle |
|-----------|------------|-------------|-------------|-----------------|-------------------|------------|---------------|
| 6/8 ans   | 40.00000   | 13.00000    | 60.00000    | 2.80000         | 3.30000           | 25         | 0             |
| 8/10 ans  | 40.00000   | 13.00000    | 60.00000    | 3.20000         | 3.70000           | 25         | 0             |
| 10/12 ans | 40.00000   | 13.00000    | 60.00000    | 3.50000         | 4.00000           | 25         | 0             |
| 12/14 ans | 40.00000   | 13.00000    | 60.00000    | 3.80000         | 4.30000           | 25         | 0             |