

## NS412


Sweatshirt eco-responsável com fecho e capuz reciclada unissex



55 % algodão reciclado pré-consumo / 45 % poliéster reciclado pós-consumo. Corte justo. Interior cardado em contraste. Fecho em nylon reciclado. Meia-lua em contraste. Malha rib 2 x 2 no decote, no cós e nos punhos. Pesponto duplo nos punhos, nas cavas, no cós e no decote. Tapa-costuras no interior. Capuz forrado no material principal. Cordão do capuz redondo com extremidade em metal. Ilhós do cordão costurados. Os produtos compostos por materiais reciclados podem apresentar ligeiras variações de composição e de cor.

 300 g/m<sup>2</sup> 

### Tamanhos

 XXS - XS - S - M - L - XL - XXL - 3XL - 4XL

### Informações complementares

Logística



IN - Índia

Código aduaneiro



61102099

### Cores



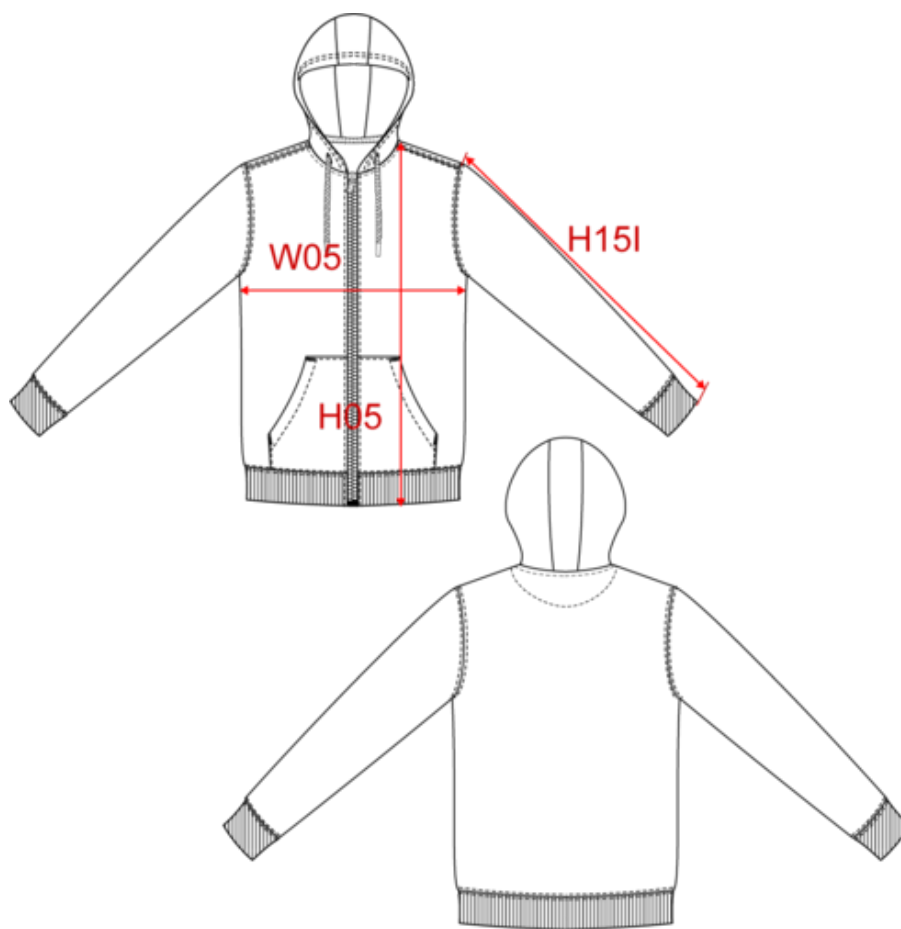



Recycled Anthracite Heather    Recycled Cream Heather    Recycled Navy Heather    Recycled Oxford Grey

### Certificações





Dimensão





| Measurements in cm                               | XXS   | XS    | S     | M     | L     | XL    | XXL   | 3XL   | 4XL   |
|--|-------|-------|-------|-------|-------|-------|-------|-------|-------|
| H05 (M) - Total height                           | 66.00 | 68.00 | 70.00 | 72.00 | 74.00 | 76.00 | 78.00 | 80.00 | 82.00 |
| H15I (M) - Sleeve length with rib                | 64.00 | 65.00 | 66.00 | 67.00 | 68.00 | 69.00 | 70.00 | 71.00 | 72.00 |
| W05 (M) - 1/2 chest width at 1.5cm below armhole | 46.00 | 49.00 | 52.00 | 55.00 | 58.00 | 61.00 | 64.00 | 67.00 | 70.00 |

Informações das cores

 **Recycled Anthracite Heather**  
 RVB :  
 Pantone C : Based on 446C  
 Pantone TCX : Based on 19-0201TCX

 **Recycled Cream Heather**  
 RVB :  
 Pantone C : Based on Warm Gray 1C  
 Pantone TCX : Based on 13-4108TCX

 **Recycled Navy Heather**  
 RVB :  
 Pantone C : Based on 432C  
 Pantone TCX : Based on 19-4025TCX

 **Recycled Oxford Grey**  
 RVB :  
 Pantone C : Based on 877C  
 Pantone TCX : Based on 16-3915TCX

Logística



5



20

| Sizes | Width (cm) | Height (cm) | Length (cm) | Net weight (kg) | Gross weight (kg) | Pieces/Box | Pieces/Bundle |
|-------|------------|-------------|-------------|-----------------|-------------------|------------|---------------|
| XXS   | 40         | 40          | 60          | 9.20000         | 11.00000          | 20         | 0             |
| XS    | 40         | 40          | 60          | 10.00000        | 11.80000          | 20         | 0             |
| S     | 40         | 40          | 60          | 10.90000        | 12.70000          | 20         | 0             |
| M     | 40         | 40          | 60          | 11.80000        | 13.60000          | 20         | 0             |
| L     | 40         | 40          | 60          | 12.80000        | 14.60000          | 20         | 0             |
| XL    | 40         | 40          | 60          | 13.60000        | 15.40000          | 20         | 0             |
| XXL   | 40         | 40          | 60          | 14.10000        | 15.90000          | 20         | 0             |
| 3XL   | 40         | 40          | 60          | 15.00000        | 16.80000          | 20         | 0             |
| 4XL   | 40         | 40          | 60          | 15.80000        | 17.60000          | 20         | 0             |