

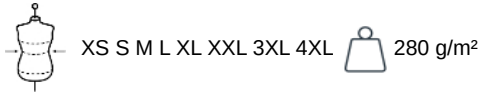
KARIBAN

K907

Chaqueta micropolar con cremallera mujer

- Ligero y cálido a la vez.
- Tratamiento antibolitas : mantiene un aspecto liso y suave con el paso del tiempo.
- Muchos colores disponibles.

100% poliéster micropolar con tratamiento anti-pilling. Corte entallado. 2 bolsillos laterales. Cierre con cremallera. Acabado de bias en cuello, sisas y a lo largo de las cremalleras. Peso medio en la talla M : 425g.



Certificaciones

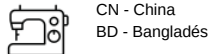


Informacion adicional

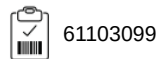
Logística



Pais de origen



Codigo de aduanas



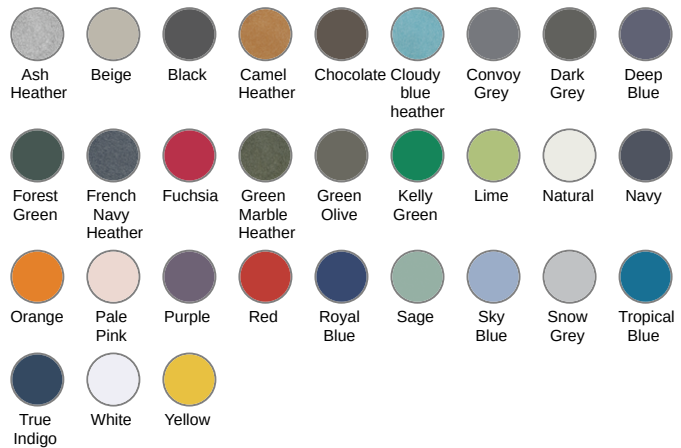
También existe en version



K911

K920

K911

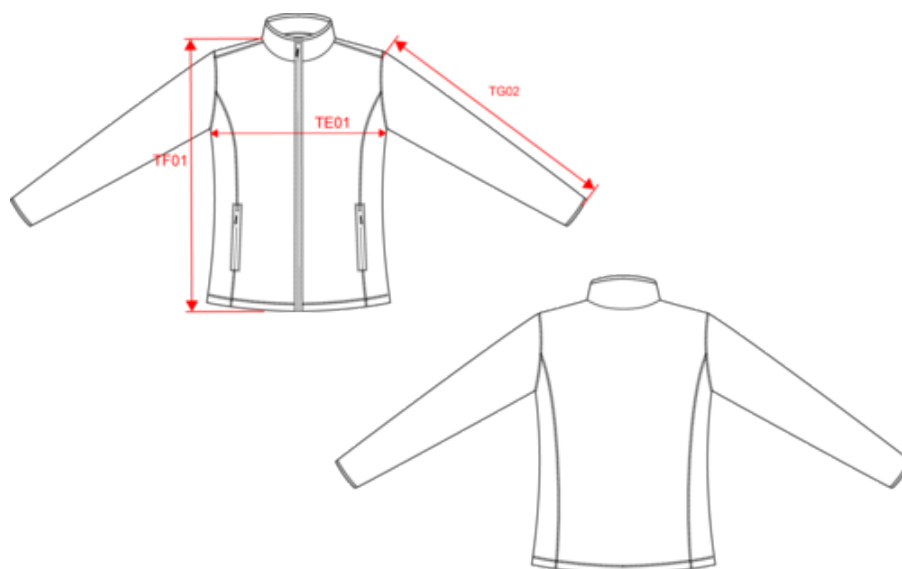


KARIBAN

K907

Chaqueta micropolar con cremallera mujer

Dimensiones



Measurements in cm	XS	S	M	L	XL	XXL	3XL	4XL
TE01 - 1/2 chest width at 1.5cm below armhole	46.00	49.00	52.00	55.00	58.00	61.00	64.00	67.00
TF01 - Total height from HSP	60.25	62.25	64.25	66.25	68.25	70.25	72.25	74.25
TG02 - Long sleeve length	58.00	59.25	60.50	61.75	63.00	64.25	65.50	66.75

KARIBAN

K907

Chaqueta micropolar con cremallera mujer

Informacion colores

 Ash Heather RVB : Pantone C : Based on Warm gray 1C Pantone TCX : Based on 13-4108TCX	 Beige RVB : 170,160,148 Pantone C : 7536C Pantone TCX : 16-0806TCX	 Black RVB : 52,51,54 Pantone C : 447C Pantone TCX : 19-4205TCX	 Camel Heather RVB : Pantone C : Based on 7504C Pantone TCX : Based on 17-1320TCX	 Chocolate RVB : 63,52,49 Pantone C : 412C Pantone TCX : 19-0910TCX
 Cloudy blue heather RVB : Pantone C : Based on 7696C Pantone TCX : Based on 16-4519TCX	 Convoy Grey RVB : 85,88,95 Pantone C : Coll Gray 11C Pantone TCX : 19-4215TCX	 Dark Grey RVB : 63,60,60 Pantone C : 447C Pantone TCX : 19-0000TCX	 Deep Blue RVB : 65,72,95 Pantone C : 7545C Pantone TCX : 19-3926TCX	 Forest Green RVB : 41,62,48 Pantone C : 5605C Pantone TCX : 19-5918TCX
 French Navy Heather RVB : Pantone C : Based on 432C Pantone TCX : Based on 19-4009TCX	 Fuchsia RVB : 188,21,94 Pantone C : 7425C Pantone TCX : 18-1945TCX	 Green Marble Heather RVB : Pantone C : Based on 418C Pantone TCX : Based on 19-0307TCX	 Green Olive RVB : 71,69,62 Pantone C : 418C Pantone TCX : 19-0506TCX	 Kelly Green RVB : 0,105,74 Pantone C : 7727C Pantone TCX : 18-5338TCX
 Lime RVB : 151,202,91 Pantone C : 367C Pantone TCX : 14-0244TCX	 Natural RVB : 229,227,215 Pantone C : 7534C Pantone TCX : 12-0404TCX	 Navy RVB : 50,57,72 Pantone C : 432C Pantone TCX : 19-4023TCX	 Orange RVB : 252,107,16 Pantone C : 1585C Pantone TCX : 16-1364TCX	 Pale Pink RVB : 244,202,209 Pantone C : 692C Pantone TCX : 12-1310TCX
 Purple RVB : 84,67,105 Pantone C : 7447C Pantone TCX : 19-3620TCX	 Red RVB : 195,32,54 Pantone C : 200C Pantone TCX : 19-1664TCX	 Royal Blue RVB : 33,59,127 Pantone C : 7687C Pantone TCX : 19-3952TCX	 Sage RVB : 153,172,163 Pantone C : 5635C Pantone TCX : 16-5304TCX	 Sky Blue RVB : 136,169,206 Pantone C : 5425C Pantone TCX : 14-4121TCX
 Snow Grey RVB : 170,174,175 Pantone C : 421C Pantone TCX : 15-4101TCX	 Tropical Blue RVB : 0,111,159 Pantone C : 7468C Pantone TCX : 18-4537TCX	 True Indigo RVB : 33,54,86 Pantone C : 534C Pantone TCX : 19-4027TCX	 White RVB : 236,236,252 Pantone C : White Pantone TCX : 11-0601TCX	 Yellow RVB : 254,186,36 Pantone C : 1235C Pantone TCX : 15-0955TCX

Logistica



1



10

Sizes	Width (cm)	Height (cm)	Length (cm)	Net weight (kg)	Gross weight (kg)	Pieces/Box	Pieces/Bundle
XS	40.00	26.00	60.00	0.00000	0.00000	10	0
S	40.00	26.00	60.00	0.00000	0.00000	10	0
M	40.00	26.00	60.00	0.00000	0.00000	10	0
L	40.00	26.00	60.00	0.00000	0.00000	10	0
XL	40.00	28.00	60.00	0.00000	0.00000	10	0
XXL	40.00	28.00	60.00	0.00000	0.00000	10	0
3XL	40.00	28.00	60.00	0.00000	0.00000	10	0
4XL	40.00	28.00	60.00	0.00000	0.00000	10	0