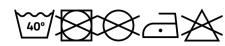


**NEBRASKA WOMAN SS6437**



**DESCRIPTION**

2-layer softshell. 1.- Inverted zip with matching chin protector and puller. 2.- Inner lining in fleece fabric. 3.- Outside pocket on right chest with matching zip and puller. 4.- Two outside pockets with matching zip and puller. 5.- Velcro fasteners in cuffs. 6.- Bottom hem with elastic cord and stoppers. Fitted-cut.

**COMPOSITION**

Two layers. Shell: 92% polyester / 8% elastane. Lining: 100% extra warm microfleece polyester. 300 gsm.

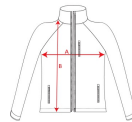
**REMARKS**

\*Water resistant. \*Wind-proof. \*Duo concept. \*Always consider the limitations of this type of fabric and the need to protect the ink from migrations when printing it. \*DTF printing not recommended for this model.

**SIZES**

Adults:: S · M · L · XL · 2XL · 3XL / :

**SCHEME**

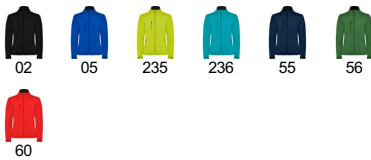


**QUANTITIES**

Box	Pack
Adults: 15 un.	1 un.



**COLORS**

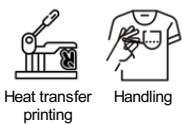


**SIZES**

Adults:	S	M	L	XL	2XL	3XL
WIDTH (A)	48cm	50cm	53cm	55cm	58cm	60cm
LONG (B)	64cm	66cm	68cm	69cm	70cm	72cm

\*[Measured from the edge 1 cm below the sleeves / Measured from the highest point of the shoulder to the end of the garment]

**PRINTING TECHNIQUES AVAILABLE**



**CERTIFICATES**

