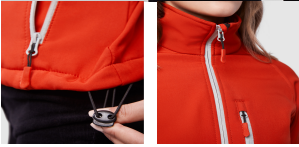
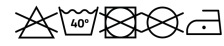


ANTARTIDA WOMAN SS6433



DUO



DESCRIPTION

2-layer softshell with inverted sealed-effect zip, with matching chin protector and zipper puller. Three outside pockets with matching zip and puller. Velcro fasteners in cuffs. Bottom hem with elastic drawcord and stoppers.

COMPOSITION

Two layers. Shell: 92 % polyester / 8% elastane. Lining: 100% extra warm microfleece polyester. 300 gsm.

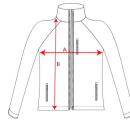
REMARKS

*Wind-proof fabric. *Water resistant *Duo Concept. *Slim-fit in women's model. *Raglan sleeve only in women's model. *Water column: 1000 mm. *Always consider the limitations of this type of fabric and the need to protect the ink from migrations when printing it. *DTF printing not recommended for this model.

SIZES

Adults:: S · M · L · XL · 2XL · 3XL / :

SCHEME



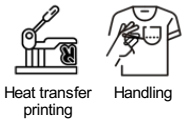
QUANTITIES

	Box	Pack
Adults:	15 un.	1 un.

COLORS



PRINTING TECHNIQUES AVAILABLE



SIZES

Adults:	S	M	L	XL	2XL	3XL
WIDTH (A)	48cm	50cm	53cm	55cm	58cm	60cm
LONG (B)	64cm	66cm	68cm	69cm	70cm	72cm

*[Measured from the edge 1 cm below the sleeves / Measured from the highest point of the shoulder to the end of the garment]

