



WK682

# B&C Hooded Full Zip /kids

PST



### Colors



### Composition

B&C, NOW sourcing 100% More Sustainable fibres for all cotton-based products

80% ring-spun cotton, combed (investing in Better Cotton\*) / 20% Recycled Polyester - RCS certified

*\*By buying this product from B&C you're supporting responsible cotton production through Better Cotton.*

### Size

3-4, 5-6, 7-8, 9-11, 12-14

### Packing

5 pcs/pack & 20 pcs/carton

### Weight

280 g/m<sup>2</sup>

### Details

B&C, NOW sourcing 100% More Sustainable fibres for all cotton-based products

The B&C Hooded Full Zip /kids is a low-maintenance layer for extra coverage during spring & autumn-time adventures, this durable midweight full zip hoodie for kids is finished with comfortable ribbed cuffs and hem. It is as snazzy and soft as it looks and ready for winter walk as school commutes. The B&C Hooded Full Zip /kids sweatshirt has 2 front pockets and a lined hood with no drawcords (EU regulation on Children's Clothing Safety compliant). Featuring B&C's Perfect Sweat Technology, the B&C Hooded Full Zip /kids is not just a college classic, it shows enhanced printability thanks to its unique fabric construction that offers the best print results. On top, it has a luxurious, soft handfeel and a quality matt appearance, combined with durability and great comfort.

With B&C PST unique fabric construction you can let your inspiration free, confident of great decoration results.

With a range of 6 colours and 5 sizes to choose from, this sweatshirt is perfect indoor and outdoor activities, fun and off the field.

### Full Zip Hooded Sweatshirt for kids

- Perfect Sweat Technology - High quality fabric for perfect printability, comfort & durability
- Tone-on-tone covered zip with piping for overall decoration
- 3 panelled hood with internal earphone loops
- Single Jersey lined hood with twill tape inside neckline
- 2 front pockets with reinforced seams
- Right-hand inside pocket has opening for earphone cord
- Flatlock topstitching on shoulders and armholes for better strength
- Cuffs and bottom hem in 1x1 rib with elastane
- Side seams

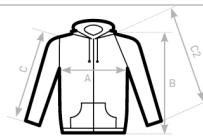
### Sustainability



### Care instructions



All our products are tested and approved using all main print techniques.



C= SET-IN SLEEVE  
C2= RAGLAN SLEEVE

B&C HOODED FULL ZIP /K. WK 682	1/2	3/4	5/6	7/8	9/11	12/14
A HALF CHEST	-	38	40	42	46	50,5
B BODY LENGTH	-	45	49,4	52,7	58,3	64,1
C SLEEVE LENGTH	-	39,9	42,6	46,2	53,7	61,2

# B&C USES ONLY RESPONSIBLY SOURCED FIBRES FOR ALL T-SHIRTS, POLO SHIRTS AND SWEATSHIRTS.

View on the website

