



The babies' zip-thru hoodie

Medium Fit	6-12 m/68-80cm → 24-36 m/92-98cm	280 GSM
------------	----------------------------------	---------

Description

- Set-in sleeve
- Lined hood in single jersey
- Single jersey tape at inside back neck and at inside of zipper
- Nylon coil reversed zip at centre front
- Top zip guard and full placket finish at centre front
- Self fabric half moon at back neck
- 1x1 rib at sleeve hem and bottom hem

Composition

Shell - French Terry
 85% Cotton - Organic Ring Spun Combed, 15% Polyester - Recycled - 280.0 GSM
 Fabric washed, Light sueded

Care instruction

Wash similar colours together, do not iron on print, wash and iron inside out. Close zip before washing.

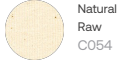


Country of origin

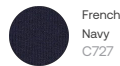
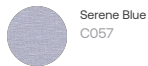
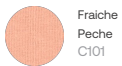
Weaving : Bangladesh
 Dyeing : Bangladesh
 Assembly : Bangladesh



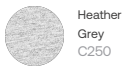
Whites



Colors



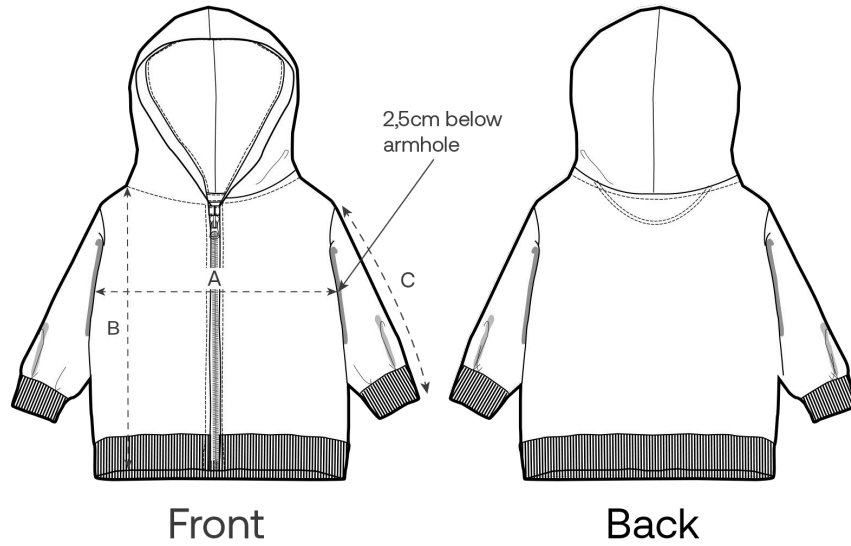
Essential Heathers



Special Heathers



Size Guide



Measurement in cm	6-12 m/68-80cm	12-18 m/80-86cm	18-24 m/86-92cm	24-36 m/92-98cm
A - Half Chest	28.5	30	31.5	32.5
B - Body Length	30.5	32	34	36.5
C - Sleeve Length	23	24	26	28.5

Packing

Sizes	6-12 m/68-80cm	12-18 m/80-86cm	18-24 m/86-92cm	24-36 m/92-98cm
Pieces / bag	5	5	5	5
Pieces / box	30	30	30	30

Environmental impact

Please note that the table below shows data for size 6-12 months for babies.

Carbon emission in Kg CO ₂ eq	Natural Raw	Eco-heather	Whites & Colours	Heathers*
From cradle to gate ¹	1.96	1.99	2.44	2.32
From cradle to grave ²	2.63	2.65	3.1	2.98

Water usage in m ³	Natural Raw	Eco-heather	Whites & Colours	Heathers*
From cradle to gate ¹	0.65	0.8	1.35	1.06
From cradle to grave ²	1.13	1.27	1.82	1.54

1 - From the extraction of raw materials to the point it leaves the manufacturer. 2 - From the extraction of raw materials to the product end-of-life. * Except Heather Haze