



The iconic kids' zip-thru hoodie sweatshirt

Medium Fit	3-4/98-104cm → 12-13/152-158cm	300 GSM
------------	--------------------------------	---------

Description

- Set-in sleeve
- Self Fabric lined hood
- Single jersey tape at inside back neck seam
- Self fabric half moon at back neck with 3 mm twin needle
- Single needle topstitch at neckline seam
- 1x1 rib at sleeve hem and bottom hem
- 2 needle topstitch centered on seam at hem, cuff and armhole
- Kangaroo pocket with 1 needle 3 mm topstitch
- Exposed metal zip at center front

Composition

- Shell - Brushed
- 100% Cotton - Organic Ring Spun Combed - 300.0 GSM
- Panel washed

Care instruction

Wash similar colours together, no ironing on print, wash and iron inside out.



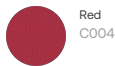
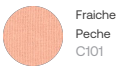
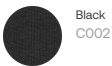
Country of origin

- Weaving : Bangladesh
- Dyeing : Bangladesh
- Assembly : Bangladesh

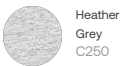
Whites



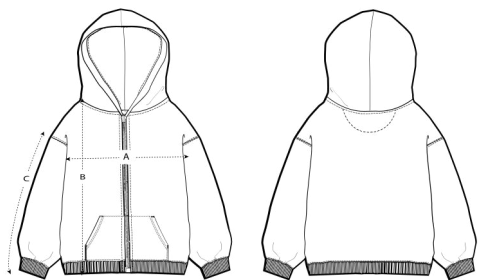
Colors



Essential Heathers



Size Guide



Measurement in cm	3-4/98-104cm	5-6/110-116cm	7-8/122-128cm	9-11/134-146cm	12-13/152-158cm
A - Half Chest	38	40	42	46	50
B - Body Length	43	46	52	59	66
C - Sleeve Length	35	37.5	43.5	50.5	57.5

Packing

Sizes	3-4/98-104cm	5-6/110-116cm	7-8/122-128cm	9-11/134-146cm	12-13/152-158cm
Pieces / bag	5	5	5	5	5
Pieces / box	20	20	20	20	20

Environmental impact for sizes 3-4 years

Please note that the table below shows data for a child aged 3 to 4 years.

Carbon emission in Kg CO2eq	Natural Raw	Eco-heather	Whites & Colours	Heathers*
From cradle to gate ¹	2.45	-	3.78	3.83
From cradle to grave ²	3.41	-	5.03	5.08

Water usage in m³	Natural Raw	Eco-heather	Whites & Colours	Heathers*
From cradle to gate ¹	0.89	-	1.92	2.05
From cradle to grave ²	1.57	-	2.78	2.91

Environmental impact for sizes 9-11 years

Please note that the table below shows data for a child aged 9 to 11 years.

Carbon emission in Kg CO2eq	Natural Raw	Eco-heather	Whites & Colours	Heathers*
From cradle to gate ¹	3.18	-	5.66	5.74
From cradle to grave ²	4.46	-	7.57	7.64

Water usage in m³	Natural Raw	Eco-heather	Whites & Colours	Heathers*
From cradle to gate ¹	1.18	-	2.94	3.14
From cradle to grave ²	2.08	-	4.23	4.43

1 - From the extraction of raw materials to the point it leaves the manufacturer. 2 - From the extraction of raw materials to the product end-of-life. * Except Heather Haze