



The iconic kids' crew neck sweatshirt

Medium Fit	3-4/98-104cm → 12-13/152-158cm	300 GSM
------------	--------------------------------	---------

Description

- Set-in sleeve
- 1x1 rib at neck collar, sleeve hem and bottom hem
- Inside back neck tape in single jersey
- Self fabric Half moon at back neck with 3 mm twin needle
- Single needle topstitch at neck collar
- 2 needle topstitch centered on seam at hem, cuff and armhole

Composition

- Shell - Brushed
- 100% Cotton - Organic Ring Spun Combed - 300.0 GSM
- Panel washed

Care instruction

Wash similar colours together, no ironing on print, wash and iron inside out.



Country of origin

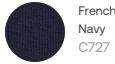
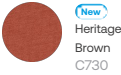
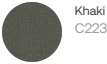
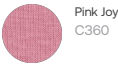
- Weaving : Bangladesh
- Dyeing : Bangladesh
- Assembly : Bangladesh



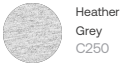
Whites



Colors



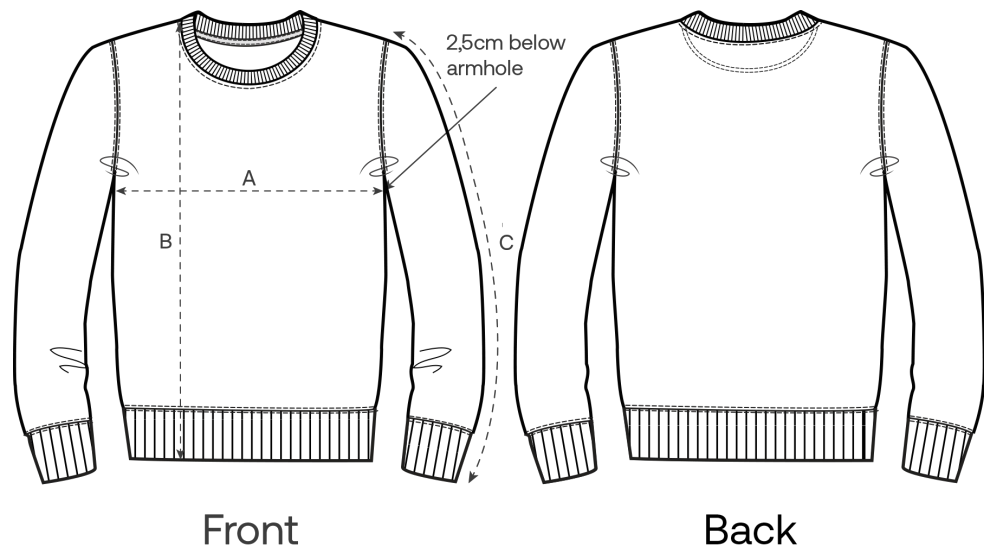
Essential Heathers



Special Heathers



Size Guide



Measurement in cm	3-4/98-104cm	5-6/110-116cm	7-8/122-128cm	9-11/134-146cm	12-13/152-158cm
A - Half Chest	38	40	42	46	50
B - Body Length	43	46	52	59	66
C - Sleeve Length	32	37.5	43.5	50.5	57.5

Packing

Sizes	3-4/98-104cm	5-6/110-116cm	7-8/122-128cm	9-11/134-146cm	12-13/152-158cm
Pieces / bag	5	5	5	5	5
Pieces / box	20	20	20	20	20

Environmental impact for sizes 3-4 years

Please note that the table below shows data for a child aged 3 to 4 years.

Carbon emission in Kg CO2eq	Natural Raw	Eco-heather	Whites & Colours	Heathers*
From cradle to gate ¹	1.57	1.64	1.96	2.0
From cradle to grave ²	2.28	2.35	2.67	2.71

Water usage in m³	Natural Raw	Eco-heather	Whites & Colours	Heathers*
From cradle to gate ¹	0.64	0.77	1.03	1.1
From cradle to grave ²	1.12	1.25	1.51	1.58

Environmental impact for sizes 9-11 years

Please note that the table below shows data for a child aged 9 to 11 years.

Carbon emission in Kg CO2eq	Natural Raw	Eco-heather	Whites & Colours	Heathers*
From cradle to gate ¹	2.31	2.41	2.9	2.95
From cradle to grave ²	3.32	3.43	3.91	3.97

Water usage in m³	Natural Raw	Eco-heather	Whites & Colours	Heathers*
From cradle to gate ¹	0.96	1.15	1.54	1.64
From cradle to grave ²	1.65	1.85	2.23	2.34

1 - From the extraction of raw materials to the point it leaves the manufacturer. 2 - From the extraction of raw materials to the product end-of-life. * Except Heather Haze