

GUADALUPE CA6647

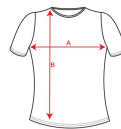


T-shirt com decote redondo debruado e pronunciado. Costuras laterais e corte ajustado.

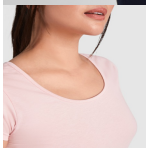
100% algodão, ponto liso, 155 g/m².

*Etiqueta removível.

:: S · M · L · XL · 2XL / :



:	100	5



	S	M	L	XL	2XL
(A)	39cm	42cm	45cm	48cm	51cm
(B)	60cm	62cm	64cm	66cm	68cm

CERTIFICATES



www.oeko-tex.com