



5000

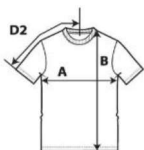
Heavy Cotton Adult T-Shirt



DETAILS

Fabric 100% Cotton, 180.0 G/SqM (White 170.0 G/SqM)
Yarn Count 20/1
Features Classic midweight fabric
 2.2 cm rib collar
 Taped neck and shoulders
 Twin-needle sleeve and bottom hems
 Classic fit, tubular body
 Grey pearlized tear away label

Country of Origin Dominican Republic, Haiti, Honduras, Nicaragua, Bangladesh
Case Packs S - 2XL 72 PIECES
 3XL 36 PIECES
 4XL - 5XL 12 PIECES
Colours 50
SKU's 280



SPECIFICATIONS

	ToI-	ToI+	S	M	L	XL	2XL	3XL	4XL	5XL
Centimeters										
Chest (A)	1.905	1.905	45.720	50.800	55.880	60.960	66.040	71.120	76.200	81.280
Length from HPS (B)	2.540	2.540	71.120	73.660	76.200	78.740	81.280	83.820	86.360	88.900
Sleeve length (Center back) (D2)	1.905	1.905	39.688	43.180	46.990	50.800	54.610	58.103	61.595	64.453
Inches										
Chest (A)	0.750	0.750	18.000	20.000	22.000	24.000	26.000	28.000	30.000	32.000
Length from HPS (B)	1.000	1.000	28.000	29.000	30.000	31.000	32.000	33.000	34.000	35.000
Sleeve length (Center back) (D2)	0.750	0.750	15.625	17.000	18.500	20.000	21.500	22.875	24.250	25.375

COLOURS

Code	Colour Chip	Sizes	Comments
246	[Red]	S-2XL	90% Cotton, 10% Polyester
248	[Green]	S-2XL	90% Cotton, 10% Polyester
249	[Blue]	S-2XL	90% Cotton, 10% Polyester
252	[Orange]	S-2XL	90% Cotton, 10% Polyester
254	[Sapphire]	S-2XL	90% Cotton, 10% Polyester
071	[Azalea]	S-2XL	
278	[Blackberry]	S-2XL	50% Cotton, 50% Polyester
011	[Cardinal Red]	S-2XL	
109	[Carolina Blue]	S-2XL	
445	[Cobalt]	S-2XL	
475	[Corn silk]	S-2XL	
098	[Daisy]	S-2XL	
033	[Forest Green]	S-2XL	
516	[Graphite Heather]	S-2XL	50% Cotton, 50% Polyester
217	[Heather Sapphire]	S-2XL	50% Cotton, 50% Polyester
010	[Heliconia]	S-2XL	
080	[Indigo Blue]	S-2XL	
186	[Kiwi]	S-2XL	
020	[Light Pink]	S-2XL	
284	[Lilac]	S-2XL	50% Cotton, 50% Polyester
012	[Lime]	S-2XL	
286	[Midnight]	S-2XL	50% Cotton, 50% Polyester