

JOPLIN CA6556



DESCRIPTION

Unisex short-sleeve t-shirt in tie-dye effect. 1x1 ribbed crew neck with covered seams in collar. Tubular design. The finish and tonality of this garment may vary within the same colour hue.

COMPOSITION

100% brushed cotton, single jersey, 160 gsm.

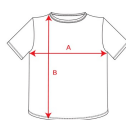
REMARKS

* Removable label. * Unisex.

SIZES

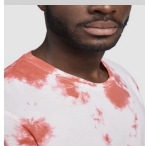
Adults:: S · M · L · XL · 2XL · 3XL / :

SCHEME



QUANTITIES

	Box	Pack
Adults:	50 un.	1 un.



COLORS



SIZES

Adults:	S	M	L	XL	2XL	3XL
WIDTH (A)	49cm	52cm	55cm	58cm	62cm	66cm
LONG (B)	69cm	71cm	73cm	75cm	77cm	79cm

*[Measured from the edge 1 cm below the sleeves / Measured from the highest point of the shoulder to the end of the garment]

PRINTING TECHNIQUES AVAILABLE



Heat transfer printing



Handing

