

KARIBAN

K822

Túnica de senhora

- Lavagem a 60°, ideal para um uso profissional.
- Tecido resistente, flexível e duradouro.
- Corte leve e confortável.

65% poliéster/35% algodão. Lavável a 60 °C. Tecido resistente e corte confortável. Bolso frontal grande com 2 compartimentos e 1 bolso pequeno no interior. Presilhas laterais de ajuste com 2 molas de pressão. Costura em contraste na parte superior do bolso. 1 etiqueta para nome no interior. Bainha arredondada. Comprimento tamanho L/XL: 78 cm.



Informações complementares

Logística



País de origem

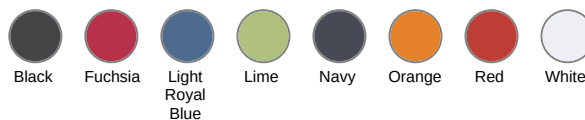


PK - Paquistão

Código aduaneiro



62114310

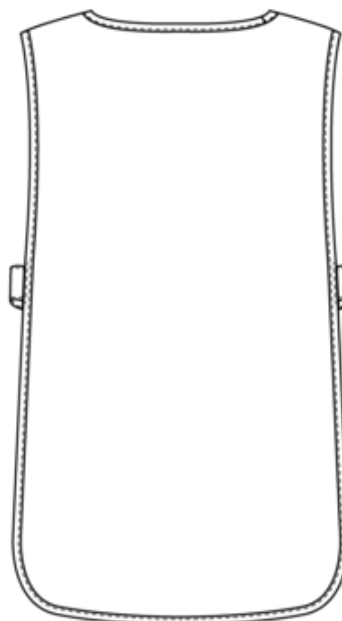
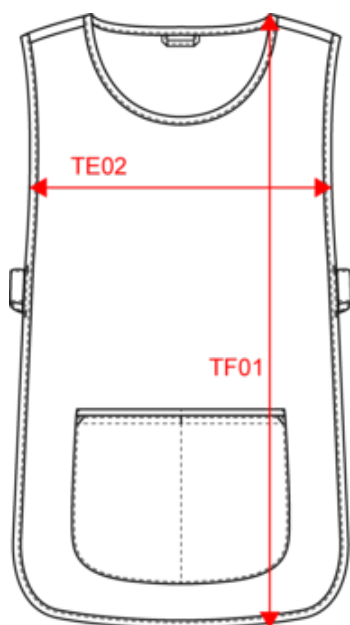


KARIBAN

K822

Túnica de senhora

Dimensão








Measurements in cm	S/M	L/XL	XXL/3XL
TE02 - 1/2 chest width at armhole bottom line	40.00		
TF01 - Total height from HSP	74.00		

KARIBAN

K822

Túnica de senhora

Informações das cores

 Black RVB : 35,35,37 Pantone C : Black Pantone TCX : 19-4004TCX	 Fuchsia RVB : 188,21,94 Pantone C : 7425C Pantone TCX : 18-1945TCX	 Light Royal Blue RVB : 53,95,151 Pantone C : 653C Pantone TCX : 18-4041TCX	 Lime RVB : 151,202,91 Pantone C : 367C Pantone TCX : 14-0244TCX	 Navy RVB : 41,46,56 Pantone C : 433C Pantone TCX : 19-4012TCX
 Orange RVB : 252,107,16 Pantone C : 1585C Pantone TCX : 16-1364TCX	 Red RVB : 195,32,54 Pantone C : 200C Pantone TCX : 19-1664TCX	 White RVB : 236,236,252 Pantone C : White Pantone TCX : 11-0601TCX		

Logístico:  10  50

Sizes	Width (cm)	Height (cm)	Length (cm)	Net weight (kg)	Gross weight (kg)	Pieces/Box	Pieces/Bundle
S/M	40.00000	14.00000	60.00000	7.40000	8.50000	50	0
L/XL	40.00000	14.00000	60.00000	8.40000	9.50000	50	0
XXL/3XL	40.00000	14.00000	60.00000	9.40000	10.50000	50	0