



About

- Comfortable and breathable towelling material.
- Made in Portugal.
- No label: 100% customisable to your brand.

80% organic cotton / 20% recycled polyester. Made in Portugal. Combed cotton. Terry towelling fabric. Straight fit with dropped shoulders. Made in Portugal. Enzyme-washed. 1x1 ribbed neckline. Tone-on-tone herringbone taped neckline. Double over stitching on cuffs and hem. Half-circle at the back. Reinforced shoulders.

 210 g/m²

Sizes



More information

Logistic



5



30



Country of origin

PT - Portugal

Customs code



61044200

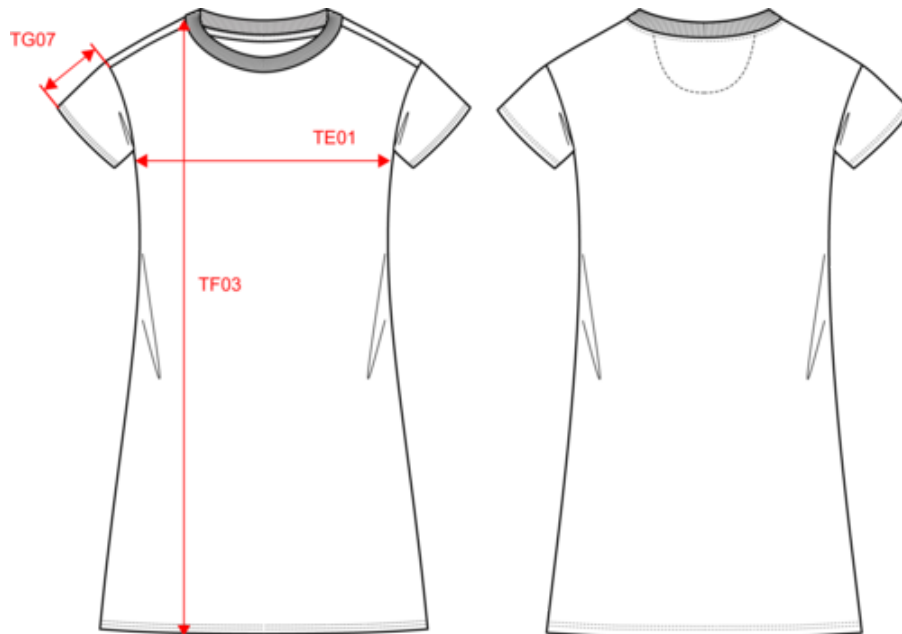
Colours



Certifications



Dimensions (cm)



Measurements in cm	XS	S	M	L	XL
TE01 - 1/2 chest width at 1.5cm below armhole	43.00	46.00	49.00	52.00	55.00
TF03 - Front total height from HSP	83.00	86.00	89.00	92.00	95.00
TG07 - Short sleeve length	13.50	14.25	15.00	15.75	16.50

NS5028

Eco-friendly ladie's Terry Towel dropped shoulders t-shirt dress

Colours information



Ivory
 RVB : 236,231,218
 Pantone C : 7534C
 Pantone TCX : 11-0701TCX



Malachite Green
 RVB : 0,111,83
 Pantone C : 335C
 Pantone TCX : 18-5338TCX



Pomelo
 RVB : 179,97,81
 Pantone C : 7522C
 Pantone TCX : 17-1532TCX

Logistic



5



30

Sizes	Width (cm)	Height (cm)	Length (cm)	Net weight (kg)	Gross weight (kg)	Pieces/Box	Pieces/Bundle
XS	40.00000	40.00000	60.00000	7.65000	7.29000	30	5
S	40.00000	40.00000	60.00000	8.00000	7.64000	30	5
M	40.00000	40.00000	60.00000	8.49000	8.13000	30	5
L	40.00000	40.00000	60.00000	9.10000	8.74000	30	5
XL	40.00000	40.00000	60.00000	10.35000	9.99000	30	5